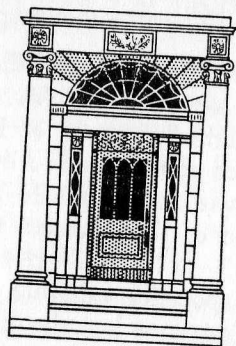


many fields of public service as a most kindly and much loved friend.

The sudden death, so shortly after that of Mr. Dick, of Mr. Andrew Buchanan on 2nd December, was a doubly hard blow to the Trustees and to the community which he so faithfully served. Mr. Buchanan had been a Life Trustee since 1947 and, after serving as Vice-Chairman from 1956 to 1959, he was Chairman from 1959 until February 1962. A man with wide practical experience of affairs, he brought to the Trust a warm sympathetic interest and his work on it was a natural projection of the innate benevolence with which he quietly served his fellow-men. To know him was a rare and fine privilege. In paying tribute to Mr. Buchanan, Mr. Alastair Reid, Chairman of the Trustees, said 'We have been illuminated and warmed by his sunny, friendly and endearing personality—a light which was never deflected by physical infirmity or pain which his great inward resources enabled him to accept and, courageously, to sustain. The after-glow remains with us and his memory will always be fragrant.'



PITREAVIE PLAYING FIELDS:

Pitreavie Playing Fields have been developed by the Trustees over a period of nearly forty years. The fine Pavilion includes 21 dressing-rooms, a lounge/dining-room, excellent spray and bath facilities, and a caretaker's house, and represents together with the playing pitches a capital investment by the Trustees before the war of almost £20,000. The Running Track was constructed in 1954 to Olympic standards, with a 440 yard circuit, at a cost of approximately £20,000. In 1961 a handsome Grandstand seating 800 spectators, with changing and ancillary accommodation for athletes and officials, stores and public lavatories, was completed at a cost of approximately £19,000. The whole spacious site extending to about 45 acres is set most attractively between Dunfermline and Rosyth, serviced by regular public transport.

The facilities at Pitreavie, particularly for athletics, are generally reckoned among the finest, if not the finest, in Scotland. The fourteen pitches are well used by local schools, clubs and other groups interested in hockey, football, rugby and cricket. In addition to regular use by the local athletic club, the Olympic Running Track has been made available for the Scottish Schoolgirls' Athletic Championships, the Scottish Women's Amateur Athletic Association Pentathlon, and several other important fixtures, notably the annual match between the Scottish Amateur Athletic Association Select and the Atalanta Club. The Trustees were gratified to learn that the Scottish Women's Amateur Athletic Association had decided to hold their 1963 Championships at Pitreavie in preference to Meadowbank, Edinburgh; this, the growing strength of the local Club (Pitreavie Amateur Athletic Club), and the increasing public interest in athletics in Dunfermline (the larger contests attract over 1,000 spectators) afford some indication of the success which has attended the Trustees' policy of providing in Dunfermline a first-class stadium and of encouraging its use by national as well as local organisations.

The Trustees' total capital expenditure on Pitreavie has been of the order of £60,000, a sum which represents only a fraction of the site's present-day value. At the end of 1962 the

Trustees offered the ground and buildings gratuitously to the County Council upon the following conditions:—

- (1) The Local Education Authority will administer the subjects as Playing Fields only, to be made available on such conditions as they may think reasonable to schools, clubs, and groups of individuals in Dunfermline and District, and to national or other bodies which are concerned with the promotion of sport or athletics.
- (2) In the event of the County Council using or permitting the use of the subjects or any part thereof for purposes other than those envisaged by Condition (1), then, at the discretion of the Trustees, the subjects will revert to the Trustees, subject only to payment to the County Council of such compensation for the then value of approved improvements or additions they may have effected to the lands and buildings, as shall be adjusted with the District Valuer.
- (3) The County Council will have power to erect additional buildings, or alter the existing buildings, provided always that these are utilised only for the purposes of sport or athletics. Before such buildings are erected or altered, plans and specifications will be submitted to the Trustees for prior approval.
- (4) In the event of the County Council deciding to erect any building which is not directly connected with sport or athletics, the site involved in the erection of such building and attached ground shall, at the option of the Trustees, revert to the Trustees free of price, and the County Council shall be bound to grant in their favour an appropriate Conveyance. A price for the site will then be adjusted with the District Valuer, and on payment of that price the Trustees will grant to the County Council a Disposition of the site in normal terms. The plans and specifications of such building will be submitted to the Trustees for prior approval, and no building operations will commence until approval has been given.

- (5) The Trustees will reserve the right to define the limits of the area within which any building may be erected.

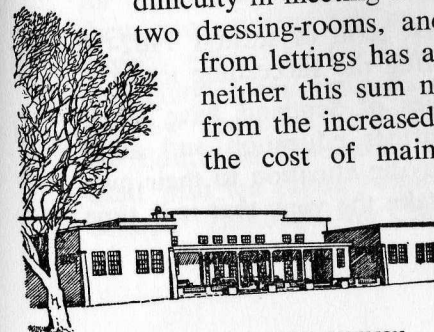
These conditions were designed to ensure that the magnificent facilities at Pitreavie will continue to provide for the sport and recreation of the people of Dunfermline, and the Trustees have naturally expressed their willingness to assist in the management of the Playing Fields during the transitional period of the transfer of responsibility by accepting representation on an Advisory Committee or other appropriate means.

Earlier in the year the Trustees had instructed the lodging of appeals against the valuation proposed by the County Assessor for the recently-completed Grandstand and the valuation which had earlier been set on the whole area. The first of these appeals was successful, the valuation of the Grandstand being set at £100, a very substantial reduction from the figure originally proposed; but the second appeal was not upheld by the Local Valuation Appeal Committee.

It had been apparent from the first that some protection from the chilly wind which accompanies any special occasion at Pitreavie would have to be incorporated in the Grandstand, and after a year's experience the Trustees decided that it was advisable to provide glass screens extending the full height of the gable ends. This work was carried out in the spring and has achieved a considerable improvement.

Another improvement was the laying out of a three-quarter size football pitch for the use of Wolf Cubs and other smaller players. The desirability of providing such a pitch was brought to the notice of the Trustees by the Dunfermline and District Boy Scouts' Association.

The charges for the use of the facilities at Pitreavie were, in accordance with the Trustees' general policy, doubled during the year, but it was not expected that the clubs would find any difficulty in meeting a charge of 10/- for the use of a pitch, two dressing-rooms, and bathing facilities. The income from lettings has averaged £60 a year for some time; neither this sum nor the additional income expected from the increased charges bears any real relation to the cost of maintaining Pitreavie, which in 1962 amounted to £3,448.



PITREAVIE PLAYING FIELD PAVILION.

The two full-time members of the Craft School teaching staff both left the service of the Trust in 1963. Mr. James Wishart, who had been Craftmaster since 1960, took up appointment with a firm of Architects in September. He was a most accomplished and versatile craftsman and a capable and attentive teacher who inspired his students to produce their best work. To Miss Margaret Arnot, D.A., whose appointment terminated at the end of December, the Trustees and students are grateful for almost fifteen years' service as Head of the Embroidery and Jewellery Sections. Her inspiration is apparent in much of the needlework and silverwork in many homes in Dunfermline and district and her flair for design was a notable influence on the work done under her supervision and encouragement.

The Trustees are also grateful to the part-time members of the Craft School Staff, Mr. G. Bernard, Mr. W. Berry, F.B.H.I. (Jewellery), Mr. J. Fothergill, Mr. Wm. Berry (Woodwork), Mr. W. Parnell, Mr. A. McGhie, Mrs. M. McLean and Mrs. A. Meldrum for the loyal service which they have rendered, several of them over a long period. They are glad to think that their association with the School will probably continue under the auspices of the Guild.

The charge has often been levelled against the Trustees that their work in initiating and maintaining social amenities in Dunfermline beyond those available in other towns has had the effect of sapping the initiative of the citizens. It is perhaps significant, therefore, that when in 1963 the Trustees announced their intention to close down the Craft School and the Youth Centre in Pilmuir Street this brought immediate reaction from enthusiastic groups voluntarily prepared to carry on these services.

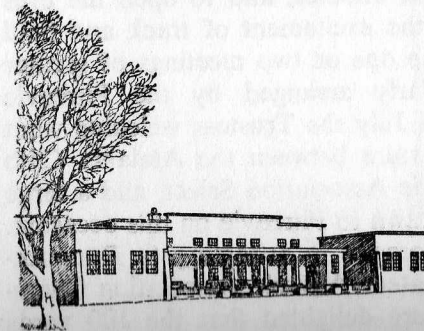
* * * * *

During 1963 the Trustees' Committee on Education, Youth & Physical Welfare disposed of Trust assets to the value, conservatively estimated, of £75,000 and engaged on a review of its other responsibilities, namely the Natural History Essay Prize Scheme and the Children's Gala Day.

PITREAVIE PLAYING FIELDS:

As was announced in the last Report, the Trustees offered at the end of 1962 to convey Pitreavie Playing Fields to Fife County Council free of cost. Following the County Council's acceptance of certain conditions laid down by the Trustees, the formal transfer took place on 15th May 1963. Thus ended the Trustees' direct association with the administration of facilities for outdoor games.

Since this will in all probability be the last mention in the Trustees' Reports of Pitreavie Playing Fields, it is perhaps appropriate to recall that it is almost 40 years since the Trustees acquired the first fields there. Before that, almost at the very beginning of the Trust, they had provided recreation grounds at Venturefair, on the northern boundary of the town. Further ground at Pitreavie was added in the early 1930s and in 1934 Mrs. Louise Whitfield Carnegie opened a handsome pavilion, which includes 21 dressing-rooms, a lounge, dining-room, excellent spray and bath facilities, and a caretaker's house. At the beginning of the war the Trustees' capital investment at Pitreavie was about £17,000, and the annual cost of maintenance was some £950. After the war the Trustees took the opportunity of acquiring a further 14 acres of ground to the east of the Playing Fields and, anticipating the growing importance in physical recreation of athletics and field events, they laid out in 1954 the present magnificent running track, constructed to Olympic standards with a 6-lane 440-yards circuit. The cost of this was almost £20,000, and to add to these facilities the Trustees in 1961 erected at a cost of a further £20,000 a grandstand which provides seating accommodation for 800 spectators, changing and ancillary accommodation for athletes and officials, storage



PITREAVIE PLAYING
FIELD PAVILION

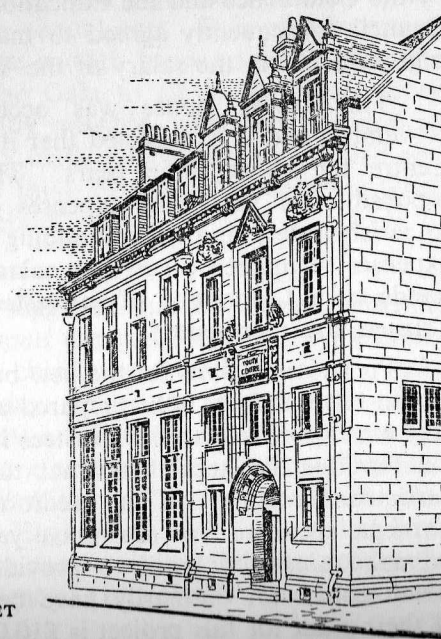
space for track equipment, and public lavatories. Capital expenditure since the war thus amounts to over £40,000, giving a total capital investment at Pitreavie since 1926 of £60,000. This sum, together with the aggregate of maintenance costs over the same period—and these in the last decade alone have exceeded £30,000—has provided for the young men and women of Dunfermline such magnificent facilities, the envy of many visiting teams, as could hardly be replaced. The whole property, extending to more than 40 acres, together with the motor vehicles and other machinery, was handed over gratuitously to the County Council (as Local Education Authority) for its continued administration as Playing Fields to be made available to schools, clubs and groups of individuals in Dunfermline and district and to national or other bodies which are concerned with the promotion of sport and athletics. The Trustees retain an ultimate reversion over the subjects and their approval must be obtained before any further buildings are erected on the site. They are also represented on the Pitreavie Joint Management Committee which has been set up by the County Council.

Pitreavie has always been well used by local schools, sports clubs and other groups interested in hockey, football, rugby and cricket. For many years it has been the home of Dunfermline Carnegie Cricket Club, which moved with the Trustees to Pitreavie from Venturefair, and of Dunfermline Carnegie Hockey Club. The local Amateur Athletic Club is now developing into a force to be reckoned with in competition, and several of its members have achieved good performances in major athletics meetings. The Trustees have always believed that their support, particularly of athletics, should not stop short at providing facilities in reinforced concrete; and they have in recent years endeavoured to encourage local athletes, and to open the eyes of the Dunfermline public to the excitement of track and field events, by bringing to Pitreavie one or two meetings of greater importance than those regularly arranged by the Pitreavie Amateur Athletic Club. Each July the Trustees welcome what has now become an annual fixture between the Atalanta Club and a Scottish Amateur Athletic Association Select, and a large and knowledgeable crowd is drawn to Pitreavie on this occasion. In 1963 the Trustees also succeeded in attracting to Dunfermline the Scottish Women's Amateur Athletic Association Championships and local people were delighted that the 100 yards

Championship was won by Miss Janet Lowe, a member of the Pitreavie Club, and the daughter of the Secretary of the Carnegie United Kingdom Trust. The Trustees intend to continue this policy of encouraging attractive meetings to come to Pitreavie, in association with the County Council, and they are setting aside for 1964 a sum of £150 which will be used either to guarantee meetings against loss or to stimulate visits from outside athletes of national or even Olympic reputation.

YOUTH CENTRE:

The Report for 1962 also announced the Trustees' decision to withdraw gradually from the direct administration of the Youth Centre. For more than 15 years they had provided in their Centre in Pilmuir Street a focussing point for youth organisations in the town, and much good work had been done there; but they felt that they ought not indefinitely to continue to allocate a significant proportion of their income to maintaining this building. Originally designed in 1919 as a Women's Centre, its lofty, imposing public rooms, serviced from distant and rambling staff quarters, were in accord more with the Palm Court Orchestra than with the Beatles, and the lack of any space for outdoor games had always been a serious disadvantage.



YOUTH CENTRE, PILMUIR STREET